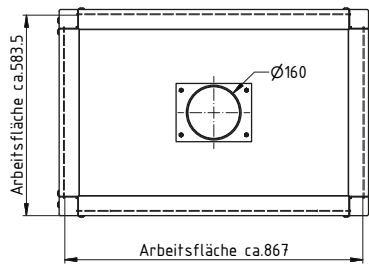
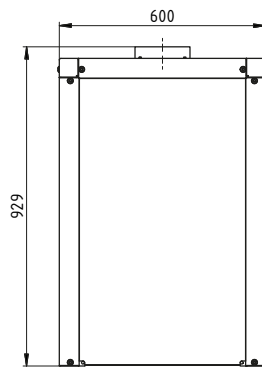
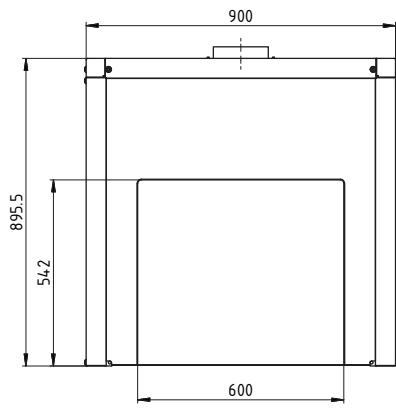


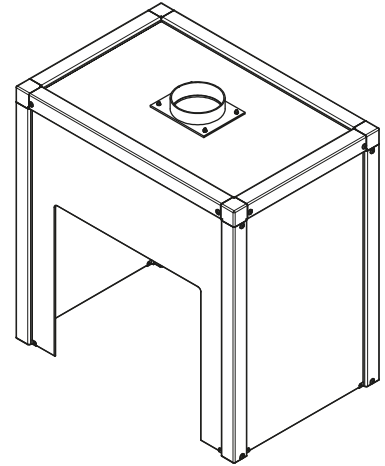

**Function / construction:**


- Ventilation testing of the air equipment in accordance with EN 14175-3 (5.4.4)
- The prescribed specified workplace limit values are maintained
- Ideal for assembly on an existing workplace
- Robust construction made of chemically resistant, anodised aluminium profiles
- Fracture-resistant acrylic glass, 5 mm
- Mounting on an on-site air exhaust system
- Connecting pieces (DN 160) in the ceiling for connection to the on-site exhaust air system
- The air speed should be 0,3 m/s

Technical data			
<b>External dimensions (mm)</b>		<b>Weight (kg)</b>	
Height (external)	900	Weight	26.4 kg
Width (external)	900		
Depth (external)	600	<b>Further information</b>	
<b>Internal dimensions (mm)</b>		Amount of air ducts	1 piece
Height front opening	542	Nominal volume flow	360 m <sup>3</sup> /h
Width front opening	600	Differential pressure per air duct	93 Pa



Isometrie ( 1 : 10 )



		Allgemein- toleranzen DIN 2768-m		Maßstab: 1 : 10	Gewicht: 27,15 kg
				Halbzeug:	Material:
8			Datum	Name	
7			Bearb.	D.Taube	
6			Gepr.		
5			Norm		
4					
3					
2					
1					
Zust.		Änderung	Datum	Name	
					
				ASE.090.090.060 Absaugereinheit	
				Ansichtszeichnung	
				Blatt	
				Bl.	
				© 2011 asecos	