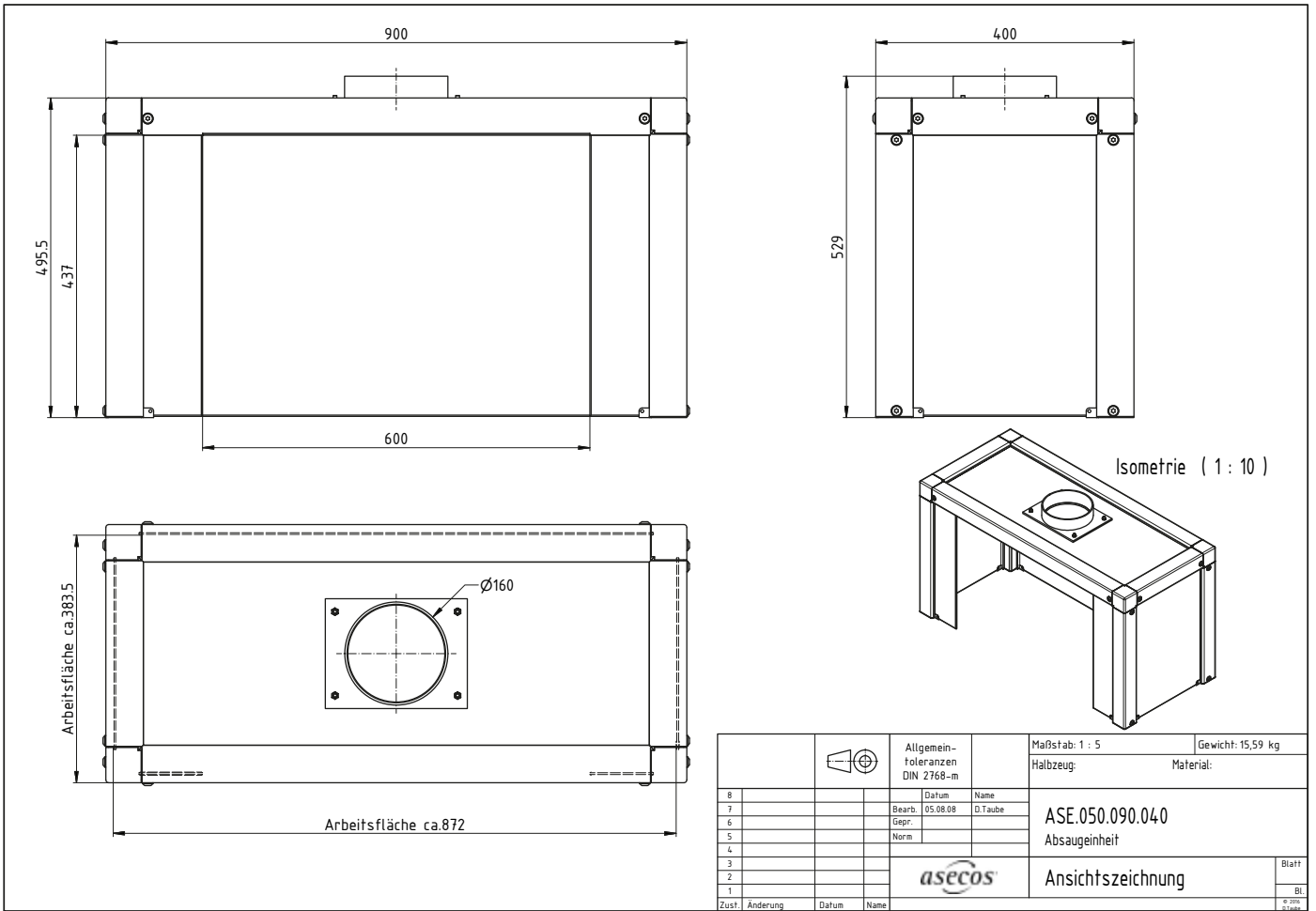



**Function / construction:**

- Ventilation testing of the air equipment in accordance with EN 14175-3 (5.4.4)
- The prescribed specified workplace limit values are maintained
- Ideal for assembly on an existing workplace
- Robust construction made of chemically resistant, anodised aluminium profiles
- Fracture-resistant acrylic glass, 5 mm
- Mounting on an on-site air exhaust system
- Connecting pieces (DN 160) in the ceiling for connection to the on-site exhaust air system
- The air speed should be 0,3 m/s

Technical data			
<b>External dimensions (mm)</b>		<b>Weight (kg)</b>	
Height (external)	500	Weight	14.6 kg
Width (external)	900		
Depth (external)	400	<b>Further information</b>	
<b>Internal dimensions (mm)</b>		Amount of air ducts	1 piece
Height front opening	437	Nominal volume flow	300 m <sup>3</sup> /h
Width front opening	600	Differential pressure per air duct	64 Pa



		Allgemein-toleranzen DIN 2768-m	Maßstab: 1 : 5	Gewicht: 15,59 kg
			Halbzeug:	Material:
8			Datum	Name
7		Bearb.	05.08.08	D.Taube
6		Gepr.		
5		Norm		
4				
3				
2				
1				
Zust.	Änderung	Datum	Name	
			ASE.050.090.040	
			Absaugereinheit	
Ansichtszeichnung				Blatt
				Bl.
				© 2011 asecos

For further information please visit [www.asecos.com](http://www.asecos.com)